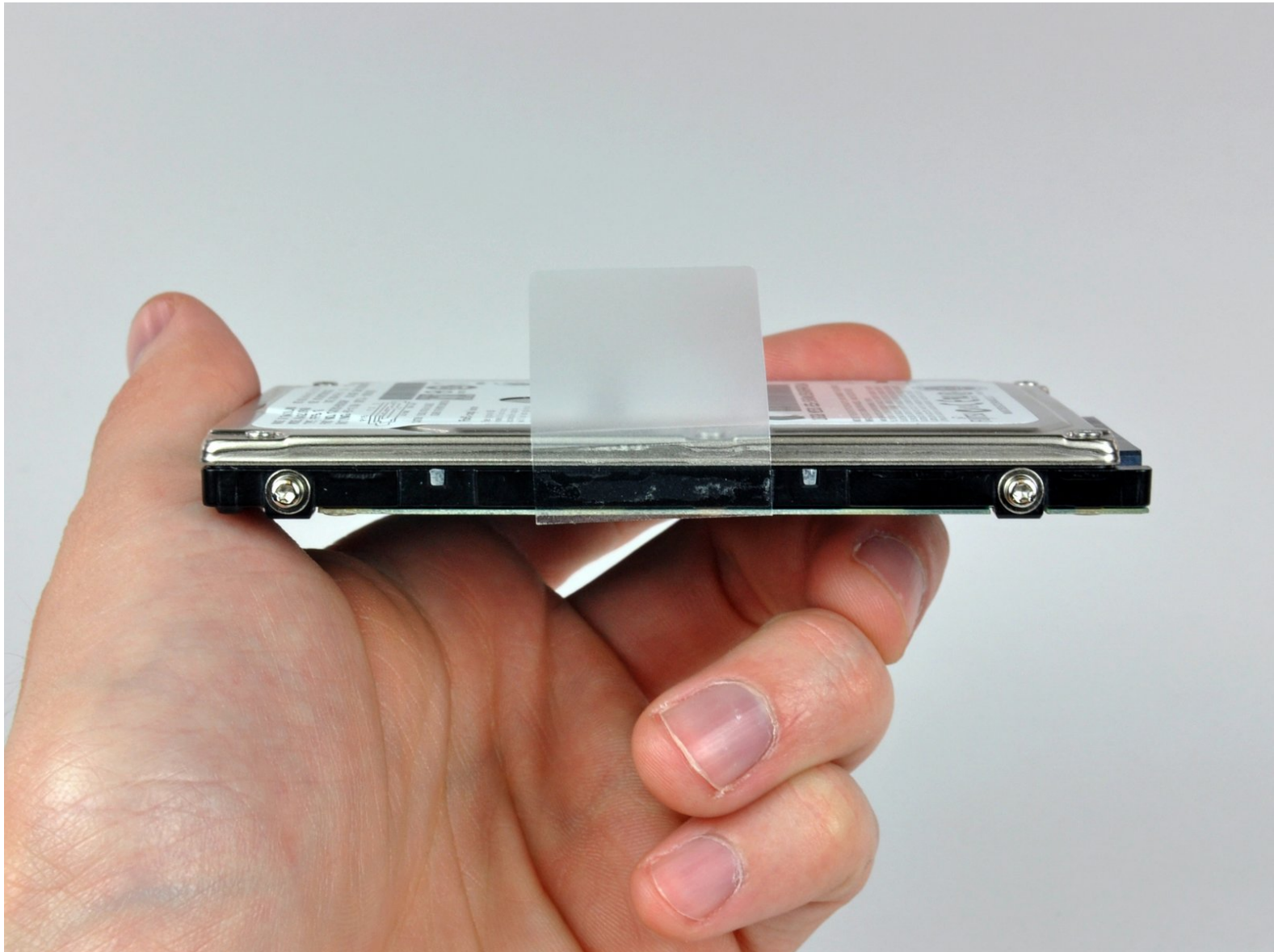




MacBook Pro 13" Unibody Mid 2009 Hard Drive Replacement

Replace the hard drive in your MacBook Pro 13" Unibody Mid 2009.

Written By: Walter Galan



INTRODUCTION

When replacing your hard drive, you must transfer the four locating pins (removed with a T6 screwdriver) from the old hard drive to the new one.



TOOLS:

- [Phillips #00 Screwdriver](#) (1)
- [Spudger](#) (1)
- [T6 Torx Screwdriver](#) (1)



PARTS:

- [MacBook and MacBook Pro \(Non-Retina\) SSD Upgrade Bundle](#) (1)
- [1 TB SSD Hybrid 2.5" Hard Drive](#) (1)
Upgrade Kit
This kit contains the drive and all tools needed.
- [500 GB SSD Hybrid 2.5" Hard Drive](#) (1)
Upgrade Kit
This kit contains the part and tools needed.
- [250 GB SSD](#) (1)
- [500 GB SSD](#) (1)
- [1 TB SSD](#) (1)
- [500 GB 5400 RPM 2.5" Hard Drive](#) (1)
- [1 TB 5400 RPM 2.5" Hard Drive](#) (1)
- [320 GB 5400 RPM 2.5" Hard Drive](#) (1)
- [MacBook Pro 13" Unibody Hard Drive Bracket](#) (1)
- [Universal Drive Adapter](#) (1)

Step 1 — Lower Case



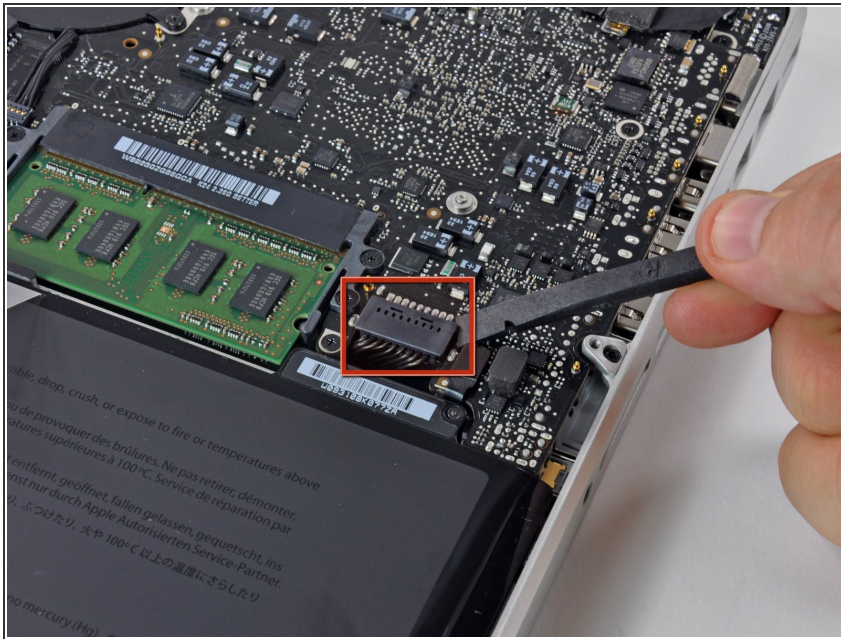
- Remove the following 10 screws securing the lower case to the MacBook Pro 13" Unibody:
 - Seven 3 mm Phillips screws.
 - Three 13.5 mm Phillips screws.

Step 2



- Slightly lift the lower case and push it toward the rear of the computer to free the mounting tabs.

Step 3 — Battery



⚠ For precautionary purposes, we advise that you disconnect the battery connector from the logic board to avoid any electrical discharge.

- Use the flat end of a spudger to lift the battery connector up out of its socket on the logic board.

Step 4 — Hard Drive



- Remove two Phillips screws securing the hard drive bracket to the upper case.
- i** These screws are captive to the hard drive bracket.

Step 5



- Lift the the retaining bracket out of the upper case.

Step 6



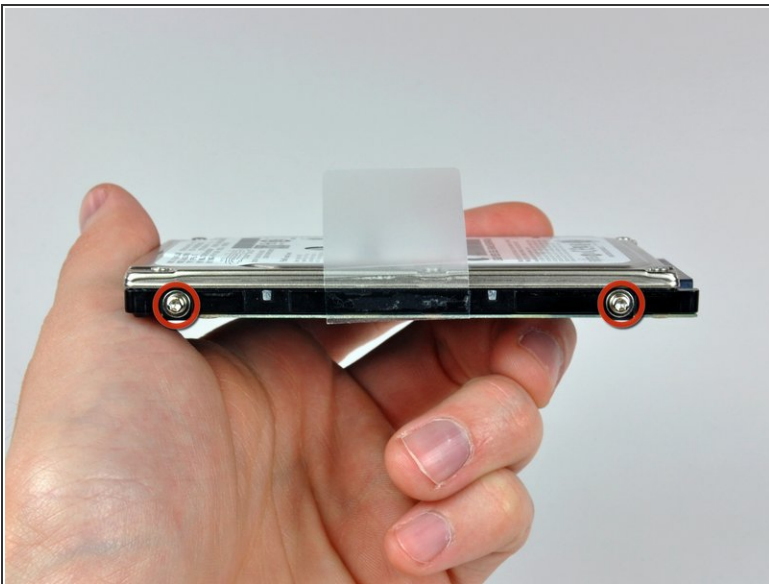
- Lift the hard drive by its pull tab and pull it out of the chassis, minding the cable attaching it to the computer.

Step 7



- Remove the hard drive cable by pulling its connector straight away from the hard drive.

Step 8 — Hard Drive



- Remove the two T6 Torx screws from each side of the hard drive (four screws total).
- ☞ You'll need to transfer these screws to your new hard drive if you're changing drives.
- 📍 If you are installing a new hard drive, we have an [OS X install guide](#) to get you up and running.

To reassemble your device, follow these instructions in reverse order.